

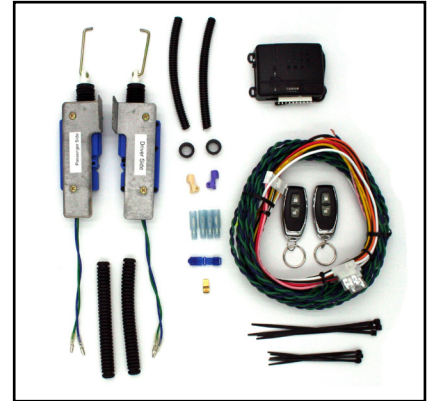


Part #FRDF7379DR2  
1973-79 Ford F Series Keyless Entry  
**Klassic Keyless Installation Guide**

**Step 1 - Unpack Klassic Keyless entry system and verify contents.**

Remove all items from the shipping box. You should have the following before beginning:

- \* (1) Keyless entry module
- \* (2) Keyless entry remote controls
- \* (2) Door lock actuators
- \* (2) Door lock actuator mounting brackets (installed on actuators)
- \* (2) Door lock actuator connecting rods (installed on actuators)
- \* (2) Connecting rod retaining clips (1 purple-dr. side, 1 cream-pass. side)
- \* (2) Rubber doorjamb boots
- \* (1) Wire harness
- \* (4) Blue female bullet crimp connectors
- \* (1) Blue T-tap
- \* (1) Brass Fuse Tap
- \* (2) Black plastic hole grommets
- \* (2) 6" pieces of split loom
- \* Wire zip ties



**Step 2 - Gather the required tools.**

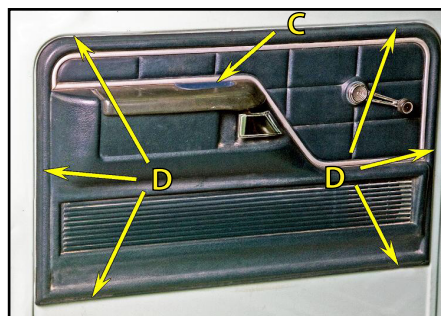
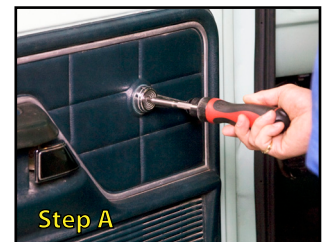
Please gather the following tools before you begin the installation:

- \* Power Drill
- \* (3) Drill bits (3/16", 7/16", Step drill bit)
- \* Wire connector crimping tool
- \* (1) Phillips head screw driver
- \* Ratchet and (2) sockets (7/16" & 1/2")
- \* Tape Measure
- \* Pliers
- \* Door Panel Remover Tool
- \* Sharpie
- \* Center Punch



**Step 3 - Disassembly of doors on truck.**

- A.** Roll door window all the way up then remove window crank with phillips head screwdriver.
- B.** Remove interior door handle by removing phillips head screw from underside.
- C.** Remove 2 phillips head screws from inside arm rest cup.
- D.** Use door panel remover tool for clips around perimeter of door panel and remove panel.
- E.** Remove door weather shield (if present).
- F.** Repeat **steps A-E** for passenger side of truck.



## Step 4 - Drill one hole in front door end.

- A. With  $3/16''$  bit in drill, drill pilot hole in front inner door structure just below upper door hinge as shown in picture.  
**NOTE: Be careful not to drill through outer door skin.**
- B. Replace  $3/16''$  drill bit with  $7/16''$  bit and enlarge the hole.



## Step 5 - Drill one hole through kick panel.

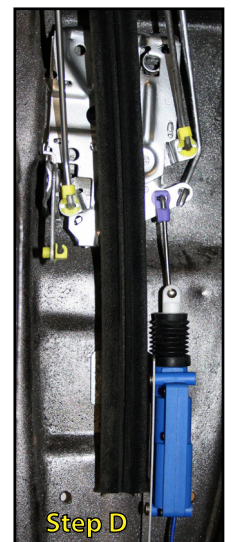
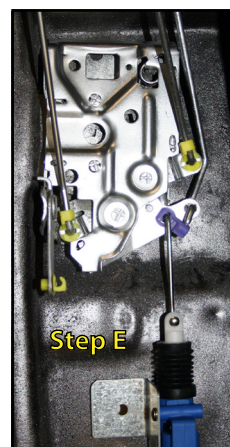
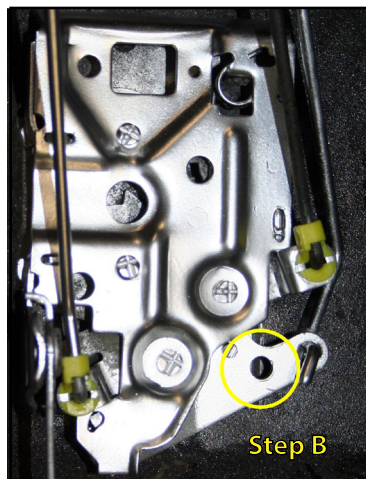
- A. Drill  $3/16''$  pilot hole,  $4\ 1/2''$  from door weather stripping as high as you can going through the parking brake under the dash, from the kick panel out into door jamb, then enlarge with  $7/16''$  bit. You will be drilling through 2 layers of metal.
- B. Using step drill bit, enlarge inside hole only to  $1/2''$  and snap in supplied plastic grommet.



## Step 6 - Install door lock actuator.

- A. Using a  $7/16''$  socket, loosen the bolt below the door latch on the door end. Remove bolt for window guide.
- B. Inside the door, locate pre-stamped hole in door latch next to the lock knob rod.
- C. Insert purple retaining clip (cream clip on the passenger side) into the pre-stamped hole on the door latch.
- D. Slide bracket attached to the actuator under the window guide and reinstall the bolt thru the large hole on the bracket into the window guide from the outside of the door. Tighten with ratchet and socket.
- E. Insert the actuator rod into the purple retaining clip and twist the clip so it locks onto the rod.

**NOTE: Window channel has been removed for photographic purposes only.**



## Step 7 - Repeat steps 4, 5 and 6 on passenger side of truck.

- A. Repeat steps 4, 5 and 6 on passenger side of truck using the second actuator, bracket, and rod. (Use cream retaining clip on passenger side)

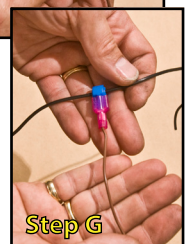
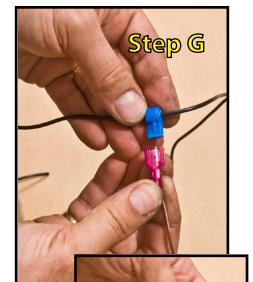
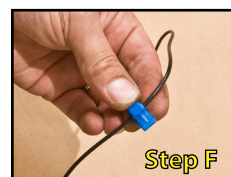
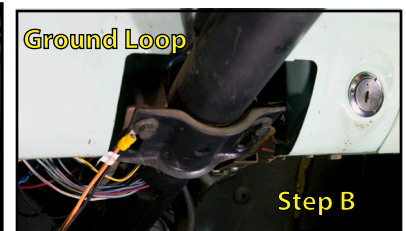
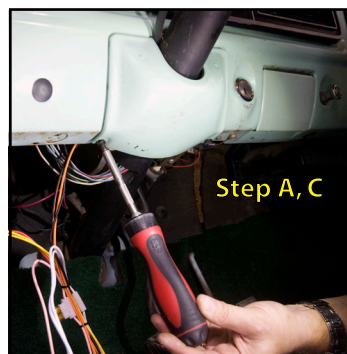
## Step 8 - Route and connect wires to door lock actuators.

- A. Unroll supplied wire harness and determine which pair of blue and green (BG) wires is shortest.
- B. Starting under the driver's side dash, near the fuse box, loop short pair of BG wires over parking brake and route close to the kick panel.
- C. Insert BG wires through hole drilled in kick panel and out into the doorjamb area.
- D. Find supplied rubber doorjamb boot and run BG wire through the boot. **(NOTE: do not loop wires around door check or hinges)**
- E. Insert BG wires through hole drilled in door end and route down low inside of door toward door latch area being careful to avoid window mechanism.
- F. Retwist and insert stripped end of one wire into the **small end** of a blue bullet connector supplied in kit. Using crimping tool, crimp connector onto wire. Repeat for other wire.
- G. Plug blue wire of actuator into the connector on the blue wire from the harness. Repeat connecting green wire to green wire.
- H. Insert ends of doorjamb boot into hole in door and cowl up to the first ring on boot to protect wires from chafing. Pull slack in wire toward interior of car.
- I. Route long BG wires through the underside of the dashboard over to the passenger's side kick panel taking care not to catch wires in any moving mechanisms.
- J. Repeat **steps C-H** on passenger side door.



## Step 9 - Connect wire harness to fuse box and keyless entry module.

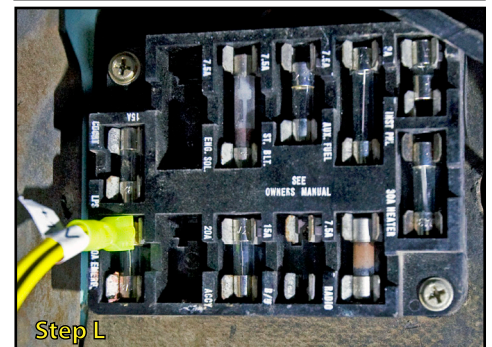
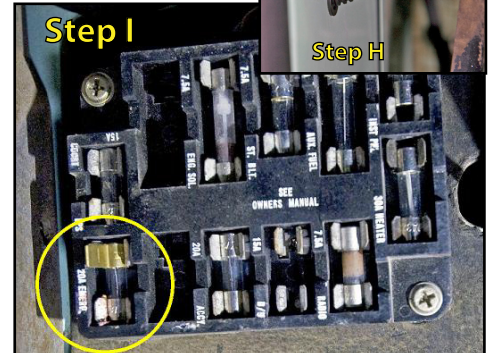
- A. Using a phillips head screw driver, remove the steering column cover.
- B. Using the 1/2" socket and ratchet, remove the left side lower steering column bolt, put bolt through the ground loop (ring terminal tagged **GROUND**) on the keyless entry wire harness and replace and tighten bolt.
- C. Replace the steering column cover.
- D. Locate wiring harness plugged into the back of the factory headlight switch. Remove any electrical tape wrapped around wiring and find the brown wire.
- E. Take the blue T-tap from the parts bag and place it on the brown wire in the groove on the side without the metal clip.
- F. Fold over the T-tap and squeeze with pliers until it makes click sound.
- G. Plug in the pink wire tagged **PARK LIGHTS** from the keyless entry harness to the blue T-tap.



**NOTE: T-taps and wires in photos do not match description.**

## Step 9 - Connect wire harness to fuse box and keyless entry module. (Continued)

- H. Put supplied split loom tubing over **BG** wires going into kick panel on each side.
- I. Locate fuse box mounted high on the driver side floor board. Remove bottom left fuse marked **20A EMERG.**
- J. Take brass fuse tap from the parts bag and slide it over the end of the fuse that you just removed.
- K. Press fuse and tap back into the fuse block slot with tap end up. You will have to press hard.
- L. Plug in yellow female spade terminal (Red and yellow wires tagged **+12V**) on wire harness to the fuse tap you just installed.
- M. After all connections are made to truck then plug harness into keyless entry module (black box).
- N. Test keyless entry by pressing buttons on remotes. Top button should lock doors and flash park lights one time. Bottom button should unlock doors and flash park lights twice.
- O. If all works correctly, use supplied zip ties to secure module and wires in both the doors and wires under dashboard.



## Step 10 - Reassemble vehicle.

- A. Reinstall weather shields, door panels, handles, and arm rests, checking that keyless entry works after each piece has been reinstalled to make sure no wires have been pinched.
- B. Once everything has been reinstalled and keyless entry works, your installation is complete. Enjoy the convenience of keyless entry on your classic truck.

# Klassic Keyless

For Questions or Comments  
Please Log On To [www.KlassicKeyless.com](http://www.KlassicKeyless.com)  
Or Call 402-502-6926

This manual is property of Klassic Keyless LLC. Any unauthorized duplication or use without written permission from Klassic Keyless LLC, violates Copyright laws.  
Copyright © 2010 Klassic Keyless LLC. All Rights Reserved.