

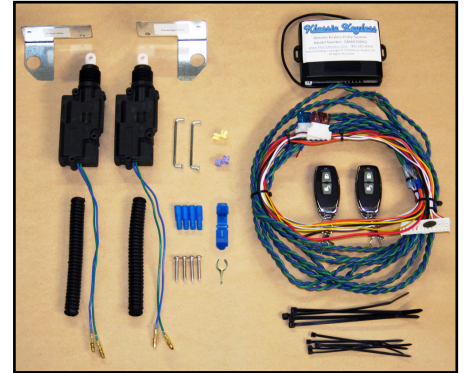
Klassic Keyless

Part #MSTNG6466 1964-66 Ford Mustang Keyless Entry Klassic Keyless Installation Guide

Step 1 - Unpack Klassic Keyless entry system and verify contents.

Remove all items from the shipping box. You should have the following before beginning:

- * (1) Keyless entry module
- * (2) Keyless entry remote controls
- * (2) Door lock actuators
- * (2) Door lock actuator mounting brackets
- * (2) Rubber doorjamb boots
- * (1) Wiring harness
- * (2) Door lock actuator connecting rods (installed on actuators)
- * (2) Connecting rod retaining clips (1 yellow-pass. side, 1 purple-dr. side)
- * (4) Blue female bullet crimp connectors
- * (1) Blue wire T tap
- * (4) Sheet metal screws
- * (1) Brass fuse tap
- * Wire zip ties
- * Printed color installation manual



Step 2 - Gather the required tools.

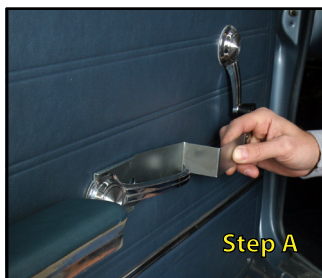
Please gather the following tools before you begin the installation:

- * Power Drill
- * (3) Drill bits: **1/4"**; **3/16"**; **1/2"**
(Step drill optional)
- * Wire connector crimping tool
- * (3) Phillips head screw drivers
(#2, #3, and stubby)
- * **1/2"** socket and ratchet
- * Door panel clip tool
- * Window crank clip tool or **5/32"** Allen wrench



Step 3 - Disassembly of doors and kick panels on car.

- A.** Roll door window all the way up. Use either window crank clip tool or **5/32"** Allen wrench to remove window crank and interior door handle. Both styles came standard from 1964-66 on the mustang.
- B.** Remove interior armrest from door by removing 2 screws from underside.
- C.** Use door panel clip tool to pry edges of door panel loose and remove panel.
- D.** Gently pull away weather shield from door.
- E.** Use large screw driver to close door latch and then **lock door with lock knob.**
- F.** Remove 9 screws, top and inside, and lift off aluminum door sill trim panel.
- G.** Unscrew and remove interior plastic kick panel.
- H.** Repeat steps A-G for opposite side of car.



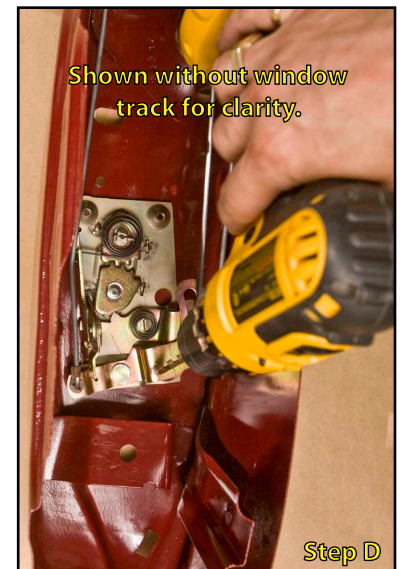
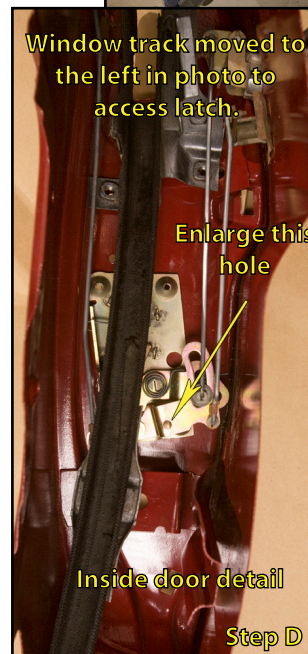
Step 4 - Drill one hole in front door end and one hole through door jamb.

- A. At the front of door, measure 3" up from the top of the lower door hinge and back 1/2" from the door gasket (in between gasket and outer door skin) and mark with a Sharpie.
- B. Use hammer and center punch to dimple metal at mark to keep drill bit from walking.
- C. Drill 3/16" pilot hole through door where dimpled.
- D. Use 1/2" drill bit in drill to enlarge pilot hole.
- E. Locate factory stamped dimple (pointing toward interior) in cowl panel through the upper hole in kick panel.
- F. Near factory dimple, drill 3/16" pilot hole from inside car out, then enlarge with 1/2" bit.



Step 5 - Enlarge door latch actuator hole.

- A. Using a flat blade screw driver, pry off the 2 chrome caps from the door end.
- B. With the ratchet and socket remove three 1/2" bolts. Two from the door end and one in the upper plug hole. Also remove the one 1/2" nut from the lower plug hole. This frees the rear window track inside the door so it can be moved.
- C. Reaching inside the door, move the rear window track away from the outer door skin, closer to the inner door structure to gain access to the door latch.
- D. Using the 1/4" drill bit, place the drill up side down, inside the door, and enlarge the factory hole in the center of the door latch lock plate.



Step 6 - Install door lock actuator.

- A. Find the bracket marked "DRIVER SIDE" (PASSENGER SIDE for passenger door) and use the supplied Phillips head screws to mount a door lock actuator to the actuator bracket. Mount it to the side of the bracket so the actuator is hanging over the large hole as shown in the photo.
- B. Using a large #3 screw driver, remove the three screws attaching the door latch to the door.
- C. Insert flared end of purple connecting rod retaining clip (yellow for passenger side) in to door latch lock hole. Turn clip so that it is pointing toward the outer door skin.
- D. With door lock actuator and bracket inside door, slide bracket under door latch so the large hole straddles the cone shaped top outside hole for the latch mounting screws.
- E. Holding the actuator tight against the stock lock rod, reinstall and tighten door latch mounting screws.
- F. Twist end of actuator if necessary and insert actuator connecting rod into hole in retaining clip.
- G. Rotate retaining clip until it snaps over connecting rod.
- H. Reinstall window guide bolts, adjust and tighten to original location.

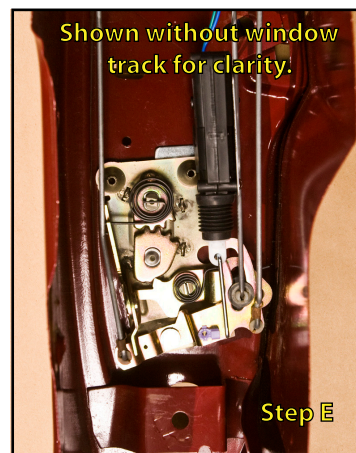
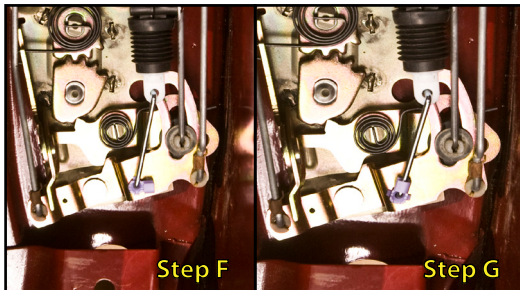
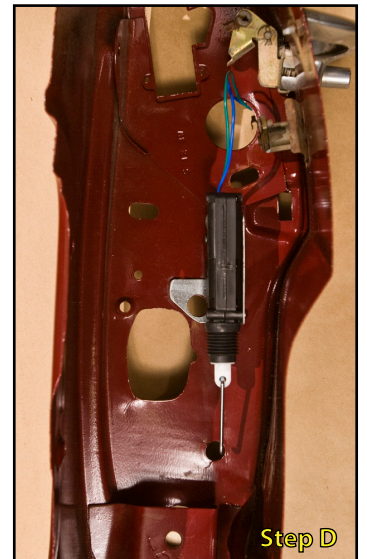
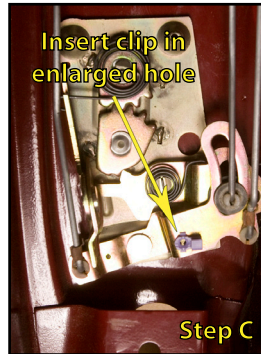
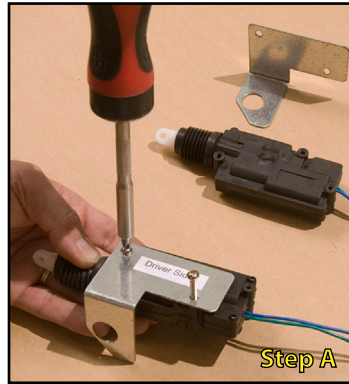


Image shown without latch or window track in place to illustrate placement of bracket. Latch removal is not necessary.

Step 7 - Repeat steps 4 through 6 on passenger side of car.

- A. Repeat steps 4 through 6 on passenger side of car using the second actuator, bracket, rod, and purple retaining clip.

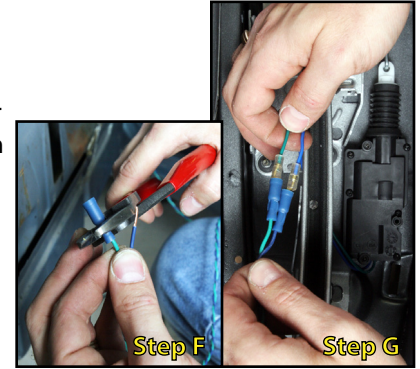
Step 8 - Route and connect wires to door lock actuators.

- A. Unroll supplied wire harness and determine which pair of blue and green (BG) wires is shortest.
- B. Starting under the driver's side dash, near the fuse box, Insert BG wires through hole drilled in kick panel and out into the doorjamb area.
- C. Find supplied rubber doorjamb boot and run BG wire through the boot. (Note: do not loop wires around door check or hinges)
- D. Insert BG wires through hole drilled in door end and route along outside face of door toward door latch area being careful to avoid window mechanism and screw mounting holes in door.



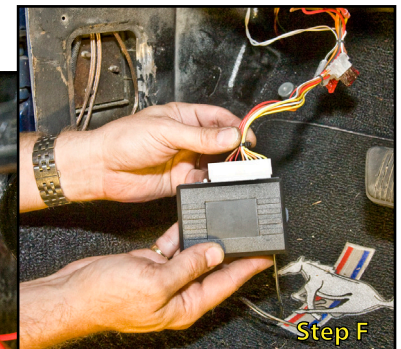
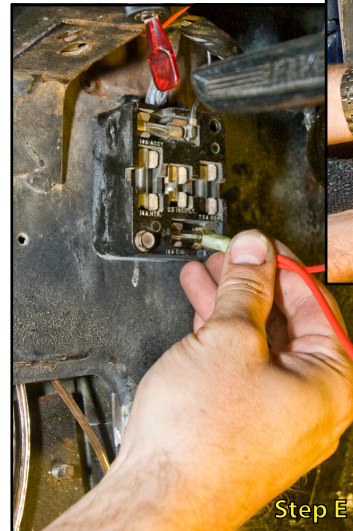
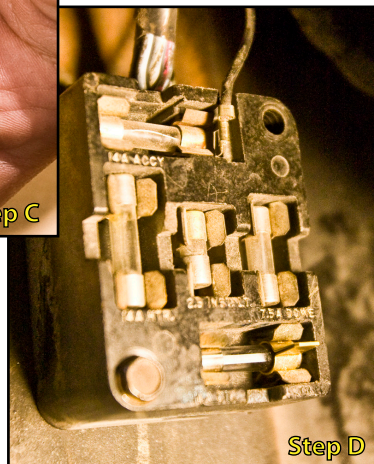
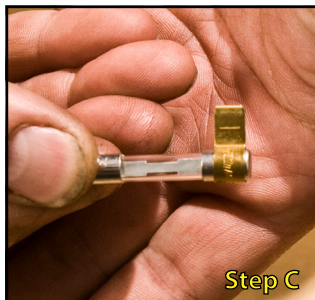
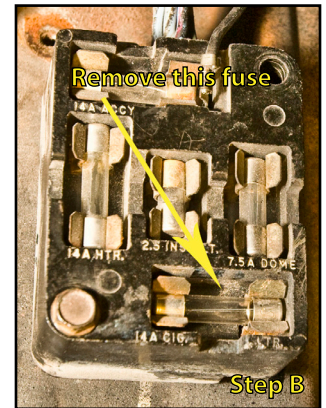
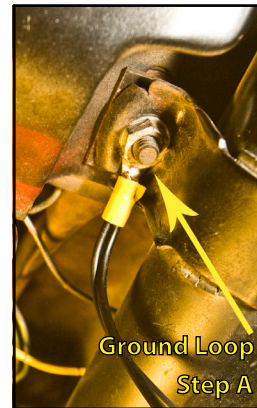
Step 8 - Route and connect wires to door lock actuators. (Continued)

- E. Retwist and insert stripped end of one wire into the **small end** of a blue bullet connector supplied in kit. Using crimping tool, crimp connector onto wire. Repeat for other wire.
- F. Route actuator wires behind window channel in door. Plug blue wire of actuator into the connector on the blue wire from the harness. Repeat connecting green wire to green wire.
- G. Insert ends of doorjamb boot into hole in door and cowl up to the first ring on boot to protect wires from chafing. Pull slack in wire toward interior of car.
- H. Route long **BG** wires through the underside of the dashboard over to the passenger's side kick panel taking care not to catch wires in any moving mechanisms.
- I. Repeat **Steps 8 C-G** on passenger side door.



Step 9 - Connect wire harness to fuse box and keyless entry module.

- A. Using **1/2"** ratchet and socket remove left side nut from upper steering column mount and bolt ground eyelet on wire harness to dashboard using original nut.
- B. Locate fuse box mounted high on the driver side kick panel. Remove bottom fuse marked **CIG. LTR.**
- C. Take brass fuse tab from the parts bag and slide it over the end of the fuse that you just removed.
- D. Press fuse and tab back into the fuse block slot with tab end toward the front of the car. You will have to press hard.
- E. Plug in yellow female spade terminal (Red and yellow wires) on wire harness to the fuse tab you just installed.
- F. Leaving brown wire disconnected, plug wire harness into keyless entry module.
- J. Test keyless entry by pressing buttons on remotes. Top button should lock doors. Bottom button should unlock doors.

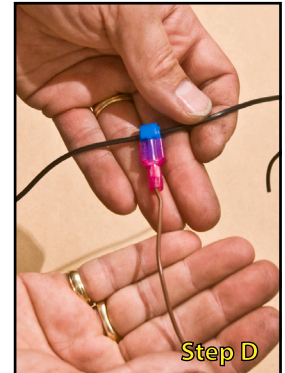
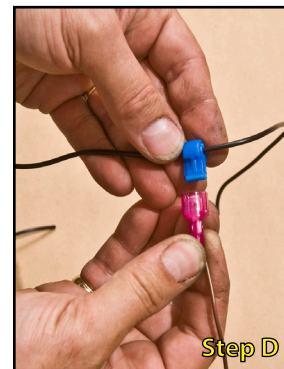
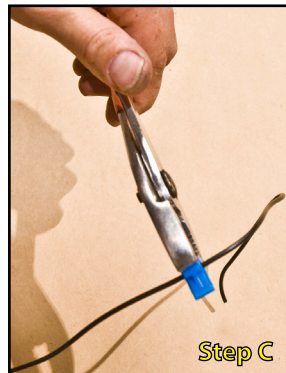


Step 10 - Parking light hook up (Optional).

- A. Locate wiring harness plugged into the back of the factory headlight switch. Remove any electrical tape wrapped around wiring and find the Black with yellow striped wire.

Step 10 - Parking light hook up (Optional). Continued

- B.** Take the Blue T-tap from the parts bag and place it on the Black/yellow stripe with the wire in the groove on the side without the metal clip.
- C.** Fold over the T-tap and squeeze with pliers until it makes click sound.
- D.** Plug in the brown wire from the keyless entry harness to the T-tap.
- E.** Press the lock button on the remote, the parking lights will blink once. Press the unlock button and the parking lights will blink twice.
- F.** If all works correctly, then use supplied zip ties to secure module and wires in both the doors and under the dashboard.



Step 11 - Reassemble vehicle.

- A.** Reinstall kick panels, door sill trim panels, weather shields, door panels, handles, and arm rests, checking that keyless entry works after each piece has been reinstalled to make sure no wires have been pinched.
- B.** Once everything has been reinstalled and keyless entry works, your installation is complete. Enjoy the convenience of keyless entry on your classic car.

Klassic Keyless

For Questions or Comments
Please Log On To www.KlassicKeyless.com
Or Call 402-502-6926

This manual is property of Klassic Keyless LLC. Any unauthorized duplication or use without written permission from Klassic Keyless LLC, violates Copyright laws.
Copyright © 2010 Klassic Keyless LLC. All Rights Reserved.