



**Detroit Speed**  
**Selecta-Speed™ Wiper Kit**  
**1964.5 -66 Mustang**  
**P/N: 121650**

The Detroit Speed Selecta-Speed™ Wiper kit provides you with the performance and convenience of a late model wiper system in a package that easily and cleanly mounts in your 1964.5-66 Mustang. The wiper motor contains a low profile, seven-speed wiper motor with five delays, low speed, and high speed, rotary switch and wiring harness.



Item #	Description	Quantity
1	Wiper Motor Assembly	1
2	Wiper Control Module	1
3	Wiper Harness	1
4	Wiper Switch Assembly	1
5	Wiper Knob w/Set Screw	1
6	Switch Bezel	1
7	Wiper Switch Locator	1
8	1/2" AN Washer	1
9	1/4"-28 x 1/2" L Hex Bolt	3
10	1/4" AN Washer	3
11	8-32 x 1/2" L Screw	2
12	8-32 Thin Nylock Nut	2
13	#8 SAE Washer	2
14	Instructions	1

This kit features a seven speed wiper system with five delays, low speed, and high speed. The new pitman arm, included in the kit, bolts directly to your existing wiper linkage. A rotary switch with a billet aluminum knob is also included, along with the complete wiring harness.

This kit does feature a washer pump option as the wiper switch does have a push button function. The wiring harness/control module is equipped with a power and ground wire to install an inline electric washer pump. Detroit Speed does offer a washer pump kit available as part number 121102.

### Installation Instructions:

1. Disconnect the battery power by removing the negative battery lead from the battery. Mark the position of the wiper arms by placing masking tape on the windshield. This will assure the arms are accurately replaced. Remove the wiper arms, washer hoses and gauge cluster assembly from the vehicle.
2. Disconnect the wiper linkage from the wiper motor under the dash by removing the retaining clip from the wiper motor pitman arm (Figure 1).



Figure 1 - Retaining Clip

3. Push the wiper linkage off the wiper motor pitman arm stud. Remove the stock wiper motor and mounting bracket located under the dash. The factory mounting bracket is held in place with 4 bolts. The 2 bolts at the top can be loosened as the mounting bracket is slotted. Remove the 2 lower bolts and the mounting bracket will slide down off the firewall.
4. The original wiring will not be used with the new Selecta-Speed Wiper Kit. A custom harness is provided to replace the original. **NOTE: If you decide to cut the old wires please pay special attention to properly terminate the wire ends to avoid possible shorting.**
5. Remove the factory wiper motor and the factory star washers/grommets from the factory mounting bracket (Figure 2 on the next page). **NOTE: The bracket used in the instructions is a one-speed wiper motor bracket. The two-speed wiper motor brackets have grommets in different locations.**



Figure 2 - Factory Wiper Motor Mounting Bracket

6. Cut out the perimeter of the wiper motor adapter template in Figure 10 on page 7. Locate the template on the mounting bracket so the large center hole lines up with the center hole in the bracket. Keep one of the straight edges (Labeled "FLANGE") on the template parallel to the flange on the right side of the mounting bracket. (Figure 3).

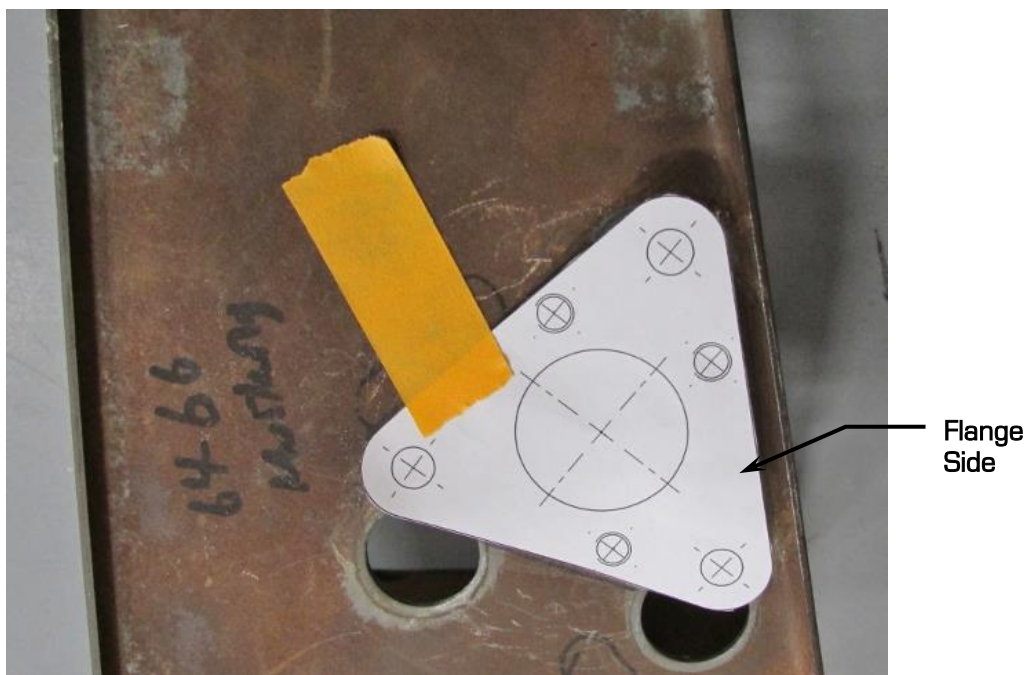


Figure 3 - Wiper Motor Spacer Template

7. Use a center punch and locate the center of the three smaller holes to the bracket (Figure 4). Remove the template from the bracket.

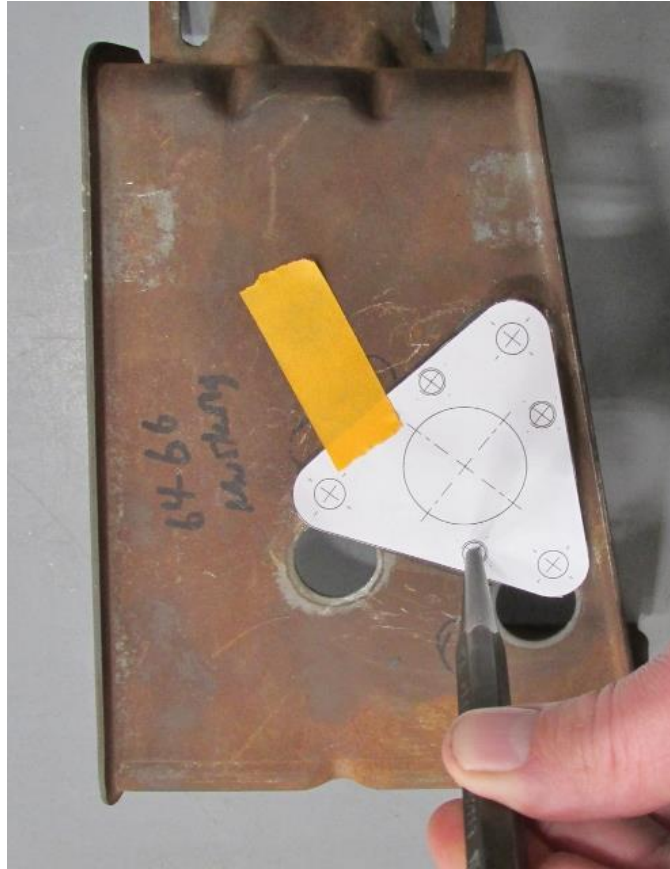


Figure 4 - Transfer Punch Bracket

8. Drill three small holes that were transferred from the motor adapter template finishing with a  $17/64$ " drill bit through the mounting bracket (Figure 5).



Figure 5 - Drill Motor Mount Holes

9. Mount the new wiper motor assembly to the factory mounting bracket with the wiper motor adapter in between the wiper motor and the mounting bracket. Use the provided 1/4"-28 x 1/2"L hex bolts and 1/4" AN washers and tighten (Figure 6).



Figure 6 - Wiper Motor

10. Mount the wiper control module to the bottom side of the factory wiper motor mounting bracket. Position the module on the bracket and mark 2 mounting holes. **NOTE:** Make sure the mounting holes are on either side of the large hole in the bracket.

11. Drill 2 holes with a 1/4" drill bit at the locations marked in the previous step. Use the provided 8-32 hardware to mount the module to the bracket (Figure 7). **NOTE:** Make sure the connectors are facing away from the mounting flange of the factory bracket.



Figure 7 - Mount the Wiper Control Module

12. Re-install the mounting bracket with the wiper motor and control module back onto the firewall. Slide the top of the bracket with the slotted holes into the 2 bolts on the firewall. Then install the 2 bolts at the bottom of the bracket that were removed in step 2 and tighten the 4 bolts.

13. Attach the new pitman arm to the original wiper linkage using your original retaining clip (Figure 8). **NOTE: The Selecta-Speed wiper kit is shipped with the pitman arm in the "parked" position.** Do not move the pitman arm by hand to attach the wiper linkage. If the pitman arm is moved from the original "parked" position from Detroit Speed, it may result in the wiper blades stopping in the wrong spot on the windshield.



Figure 8 - Attach Wiper Linkage to Pitman Arm

14. Install the wiper motor connector side of the wiring harness into the wiper motor (Figure 9).

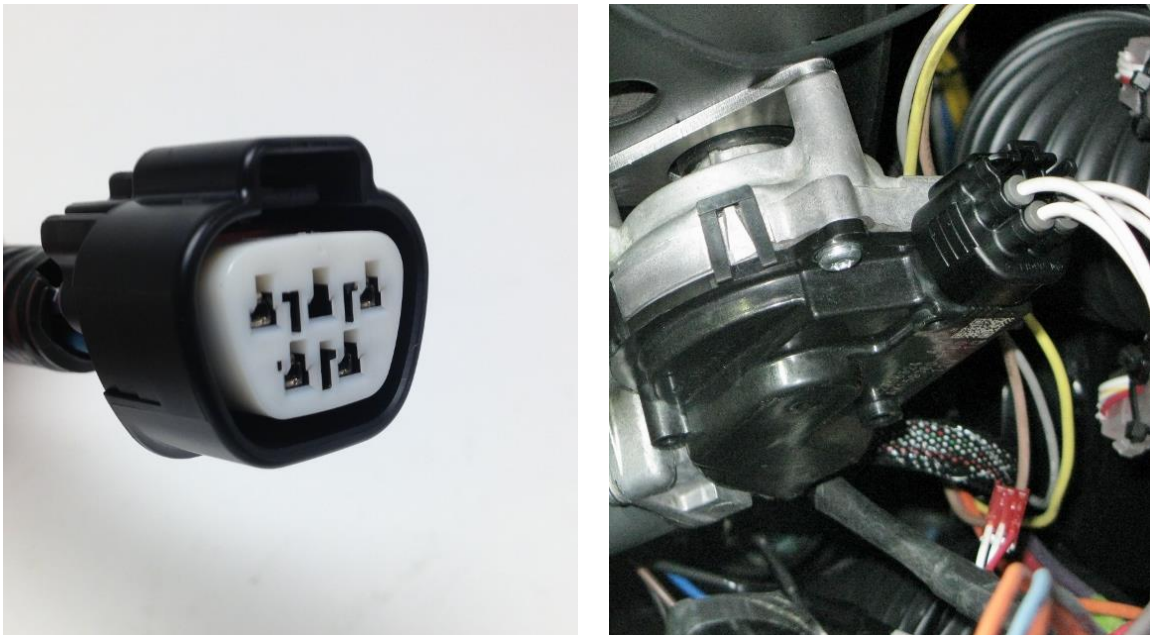


Figure 9 - Wiper Motor Connector

## Wiper Motor Adapter Template

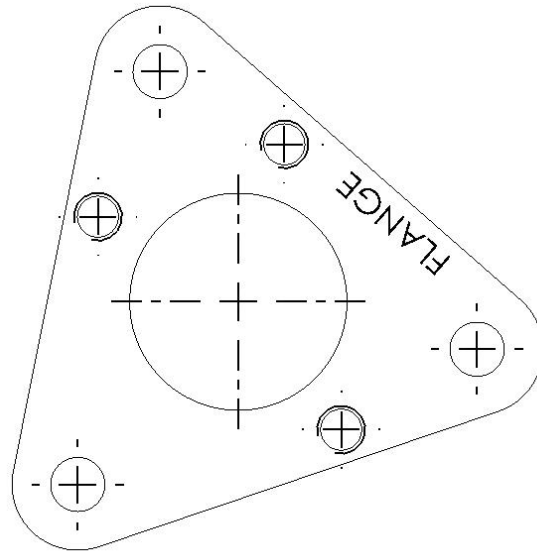


Figure 10 - Cut out Template

### 1964.5-66 Mustang Stock Dash Mount Illustration

15. Remove the stock wiper switch from the dash. The Selecta-Speed switch will replace the stock switch.
16. Mount the switch in the dash. Use the Detroit Speed supplied hardware to mount the switch in the original dash location, if desired [See Figure 11].

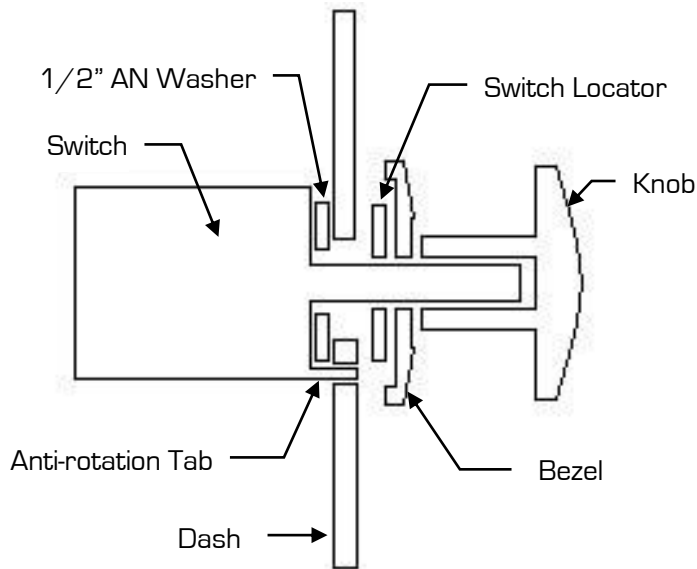


Figure 11a - Side View

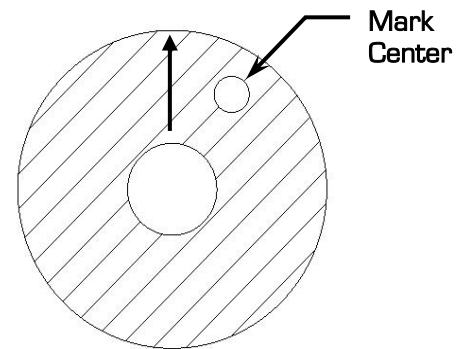


Figure 11b - Switch Mounting Template

17. Cut the template out (Figure 11b) and place it over existing wiper switch hole in the dash. Make sure arrow is pointed up. [12 o'clock position]
18. Mark the center of the unshaded circle in the dash.

**LEAVE THIS PAGE BLANK**



19. Remove the template and drill a 5/32" hole in the dash to accommodate the anti-rotation tab of the switch.
20. Place the provided 1/2" AN washer over the switch shaft and install the wiper switch into the dash. Make sure the anti-rotation tab on the switch passes through the hole in the dash that you drilled in the previous step.
21. Place the switch locator over the switch shaft followed by the bezel. Thread the bezel onto the switch shaft and tighten by hand to hold the switch in place on the dash (Figure 11a on page 7).
22. Slide the wiper knob onto the switch shaft. Align the set screw with the flat on the shaft and tighten. **NOTE:** Make sure the set screw locks onto the flat on the switch shaft.
23. The Detroit Speed Selecta-Speed harness does include a weather pack connector to install an optional electric inline washer pump into your vehicle (Figure 12). Detroit Speed does offer a washer pump kit you can purchase separately as part number 121102.



Figure 12 - Washer Pump Connection

24. If you have purchased the Detroit Speed washer pump kit, use the instructions from that kit to complete the washer pump kit installation. If you do not want to use the washer pump feature, you can tie wrap this connector/loom up under the dash.
25. Install the 10-pin connector of the wiring harness into the wiper control module located on the wiper mounting bracket. Install the 4-pin connector from the wiper switch and install it into the control module (Figure 13).

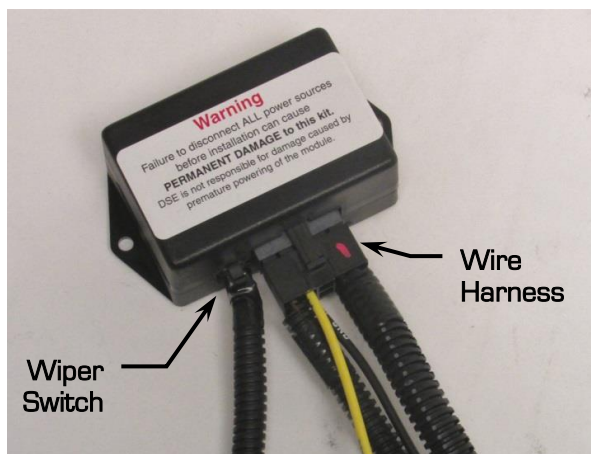
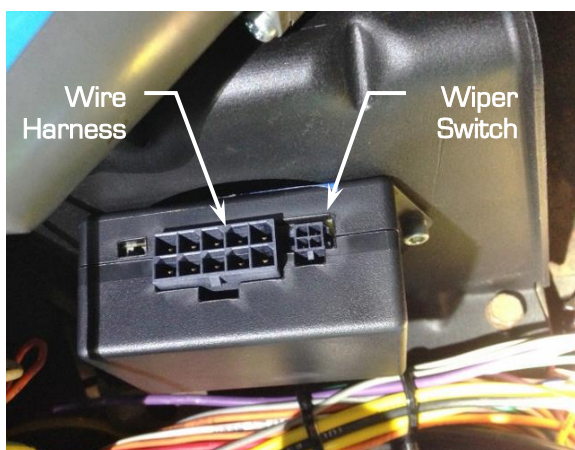


Figure 13 - Connect Wiper Switch & Harness to Module

26. Connect the yellow wire under the dash to a 12V switched source. This lead is supplied with an inline 30 amp ATO fuse.
27. Connect the black wire with the round eyelet under the dash to a ground. Make sure a proper ground is obtained by removing any rust or paint from the metal.
28. Connect the negative battery lead and test the wiper system. Upon a successful test, the wiper conversion is complete.

**NOTE:** In some cases high energy ignition systems have caused interference with the correct operation of the Selecta-Speed Wiper Kit due to spark plug wires routed closely to the wiper motor. If this occurs, re-routing your spark plug wires may be necessary.

If you have any questions before or during the installation of this product, please contact Detroit Speed at [tech@detroitsspeed.com](mailto:tech@detroitsspeed.com) or 704.662.3272

**Legal Disclaimer:** Detroit Speed is not liable for personal, property, legal, or financial damages from the use or misuse of any product we sell. The purchaser is solely responsible for the safety and performance of these products. No warranty is expressed or implied.